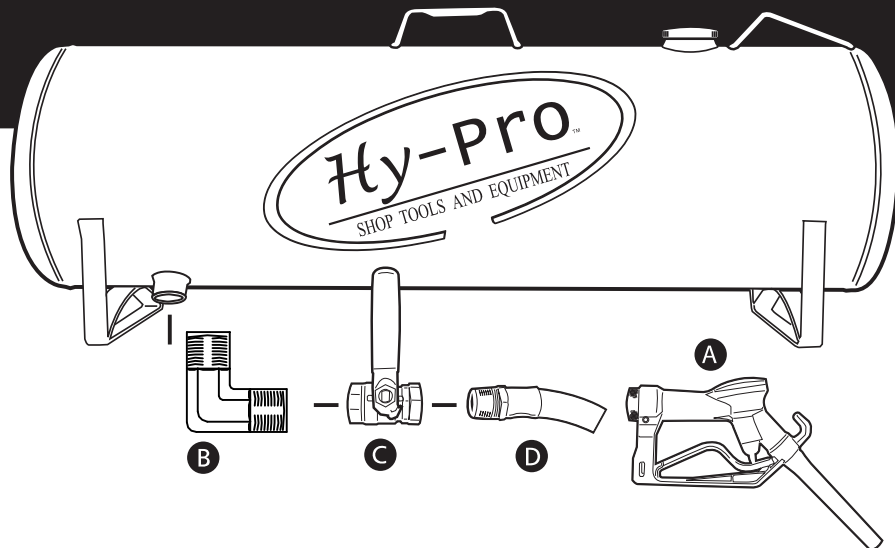


## Professional 15 Gallon Fuel Station



### Contents:

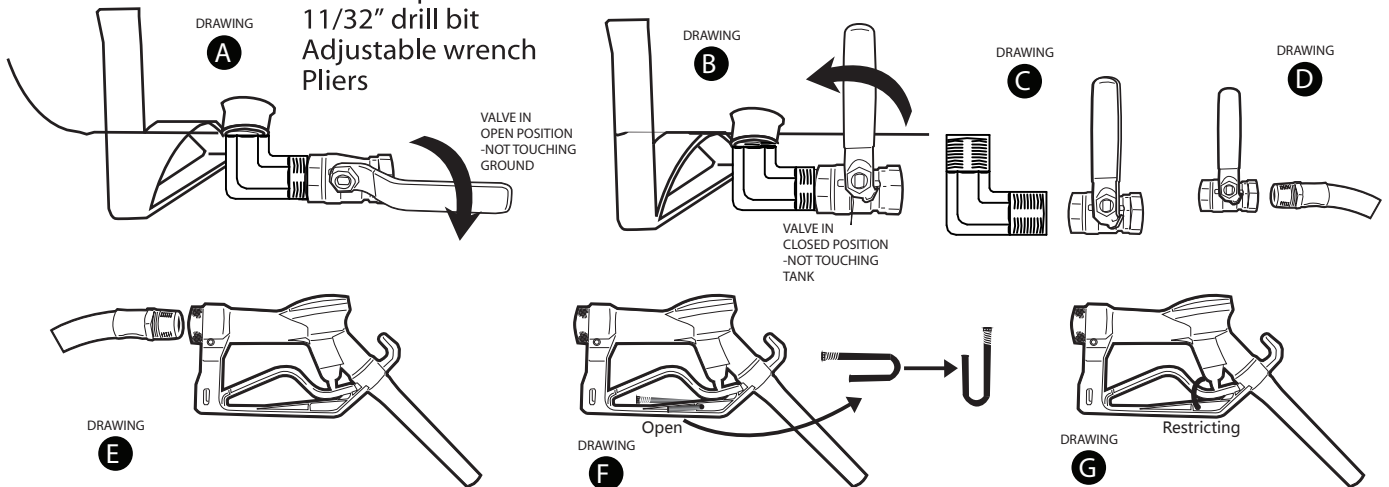
- 1- Metal Fuel Nozzle with integral safety clip (A)
- 1 - Vented Cap
- 1 - 1/2" male x 1/2" male elbow (B)
- 1 - Roll Teflon Tape
- 1 - 10' Fuel Hose with internal bonding wire (D)
- 4 - 1 1/2" x 5/16" bolts
- 4 - Nuts
- 4 - Locking Washers
- 8 - Flat Washers
- 1 - Ground Wire Assembly with bolt and nut

### Assembly Instructions:

- 1: Use Teflon tape for all threaded male connections. Wrap each thread at least 3 times for optimum sealing. C and B connections are factory sealed. (Drawing C)
- 2: Attach male end of fuel hose to brass valve. (Drawing D)
- 3: Attach fuel nozzle to opposite end of fuel hose. (Drawing E)
- 4: Attach ground wire with provided screw and nut to drilled hole in leg
- 5: Dispensing nozzle safety clip should be extended across squeeze handle when not in use to prevent unintentional release of fuel. (Drawing F&G)

### Tools Required:

- 11/32" drill bit
- Adjustable wrench
- Pliers



### Mounting Notes:

- Tank **MUST** be mounted and grounded for safe use and transportation to avoid potential static electricity charge. This unit is not designed to be used as a portable fuel container.
- Recommended mounting is to a metal frame. If not securing to a metal surface, use ground wire to avoid potential static danger.
- To achieve proper gravity flow, unit must be mounted higher than the receptacle being fueled. Mount on flat surface.

### Mounting Instructions

1. Using 11/32" drill bit, drill holes through mounting surface to align with pre-drilled holes in unit.
2. Place bolt through flat washer, tank leg, and flat surface on which unit is being mounted.
3. Lace a second flat washer through bolt on underside.
4. Lace locking washer over flat washer on underside.
5. Tighten nut down with wrench until firmly fixed in place.
6. Repeat on remaining three holes in tank.

### Filling Instructions

1. Remove vented cap from top of tank and fill normally.
2. Do not exceed 14.3 gallons (95% capacity) when filling to allow for gasoline expansion.

### Usage Instructions

1. Always ensure tank is properly grounded either with a grounded mounting or by attaching the alligator clip on the ground to a known ground.
2. Open Brass Valve to open position by pulling handle parallel to valve assembly.
3. Insert nozzle into fuel receptacle, pull safety clear of squeeze handle, squeeze handle to initiate flow.
4. Release squeeze handle to stop fuel flow.
5. Close brass valve to off position.
6. Eliminate remaining fuel in the hose by draining it back into the tank.
7. Replace safety clip to prevent accidentally squeezing the nozzle's handle.

If you have any questions regarding the proper installation or use of this product, please call HMC Industries at 515-957-1502 for assistance